

## OPTO22 CONT Protocol (Ethernet)

Supported Series: OPTO22 SNAP PAC System

Website: <http://www.opto22.com/>

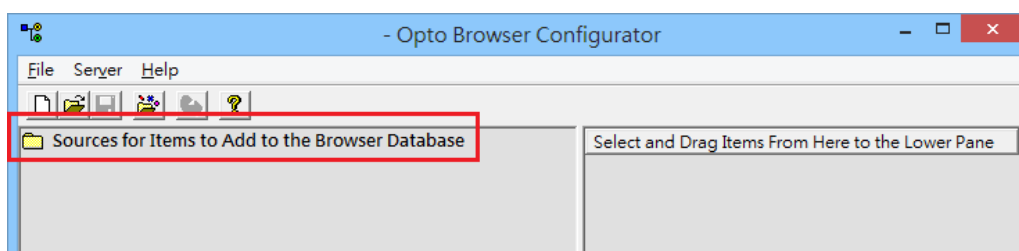
### HMI Setting:

Parameters	Recommended	Options	Notes
PLC type	OPTO22 CONT Protocol (Ethernet)		
PLC I/F	Ethernet		
Port no.	22001		

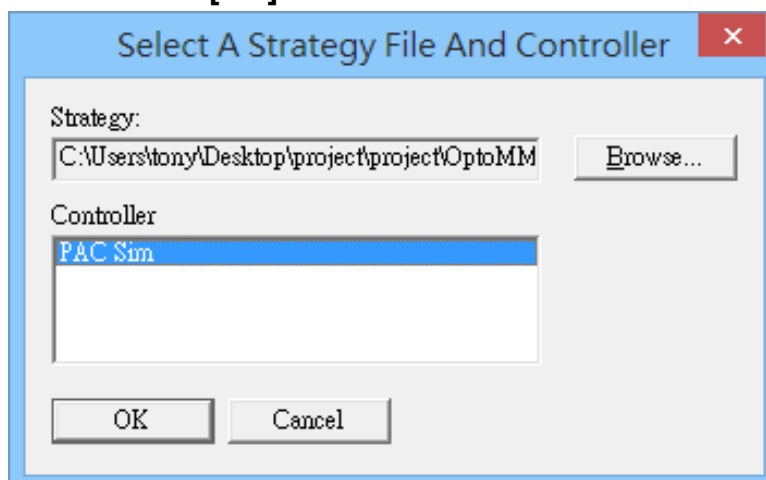
<b>On-line simulator</b>	Yes	<b>Multi-HMI connect</b>	Yes
--------------------------	-----	--------------------------	-----

### Import Tags:

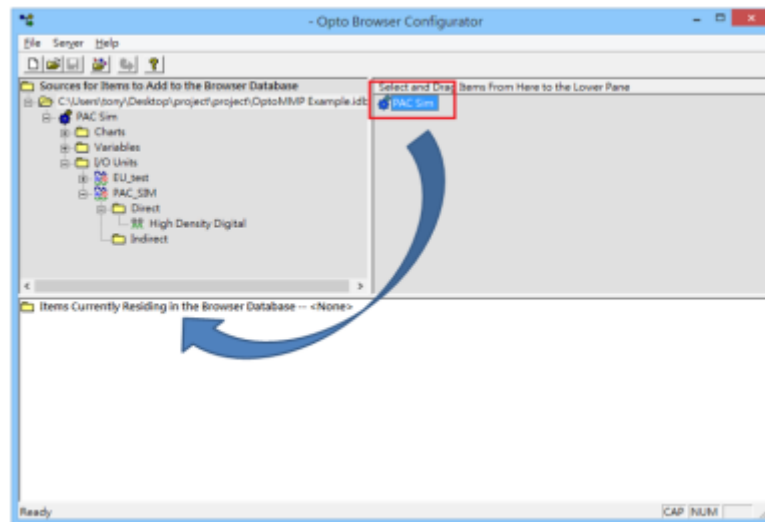
1. Open Browser Configurator, double click on **[Source for Items to Add to the Browser Database]**, and then select the PLC project containing the tags for export.



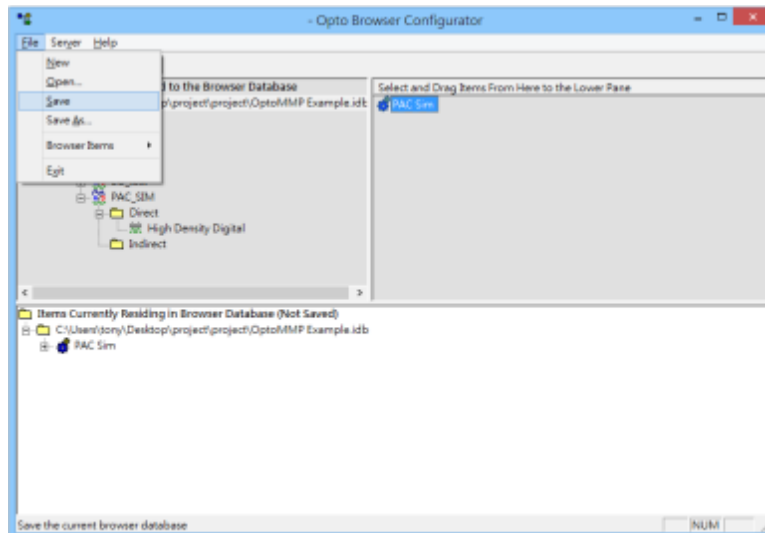
2. Select a controller and then click **[OK]**.



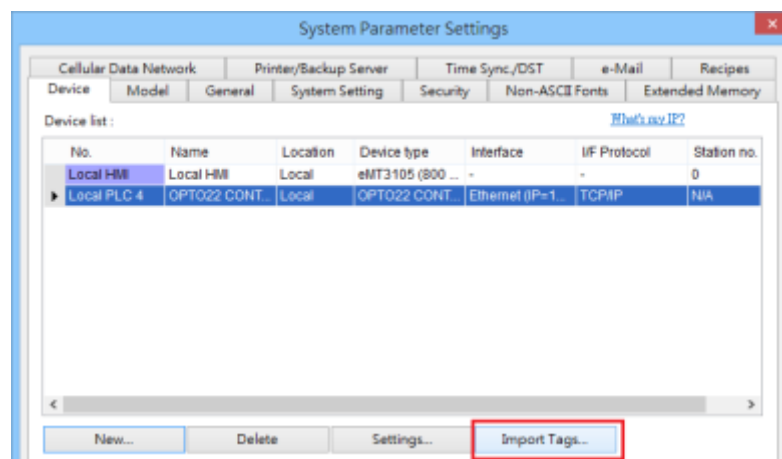
3. Drag the items from the right pane to the lower pane.



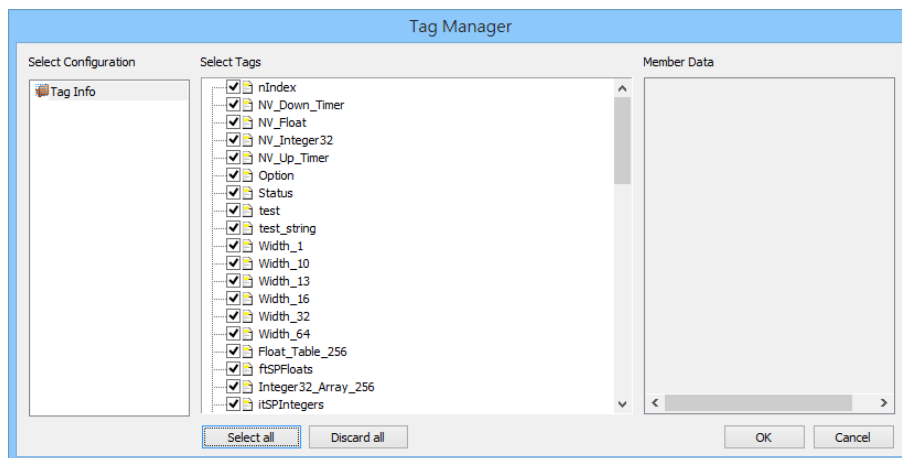
4. Name the tag file and then click **[File] » [Save]**.



5. Launch EasyBuilder Pro, add “**OPTO22 CONT Protocol (Ethernet)**” driver into the device list, set the communication parameters, and then click **[Import Tags]**.



6. Tag Manager opens after selecting a tag file. Click **[Select all]** to select all tags or select certain tags by clicking their checkboxes. Click **[OK]** to import the selected tags. **“Import tag information successfully.”** message shows when the tags are imported successfully.



## Support Device Type:

Data type	EasyBuilder data format	Memo
Bool	bit	
DInt	32-bit BCD, Hex, Binary, Signed	32-bit
Real	32-bit Float	32-bit
LInt	64-bit Signed	64-bit
String	ASCII input and ASCII display	Length=word

**Note:** EBPro V6.03.02 or later supports 64 bits data type (**cMT Series only**), but please note that the address limit range is 48 bits in maximum..

## Wiring Diagram:

### Diagram 1

Ethernet cable:

